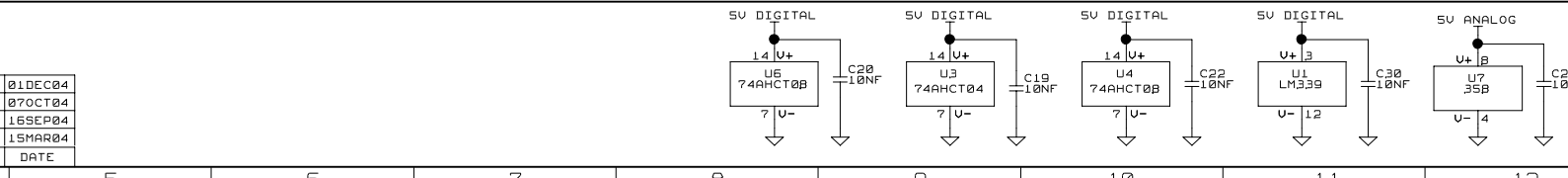
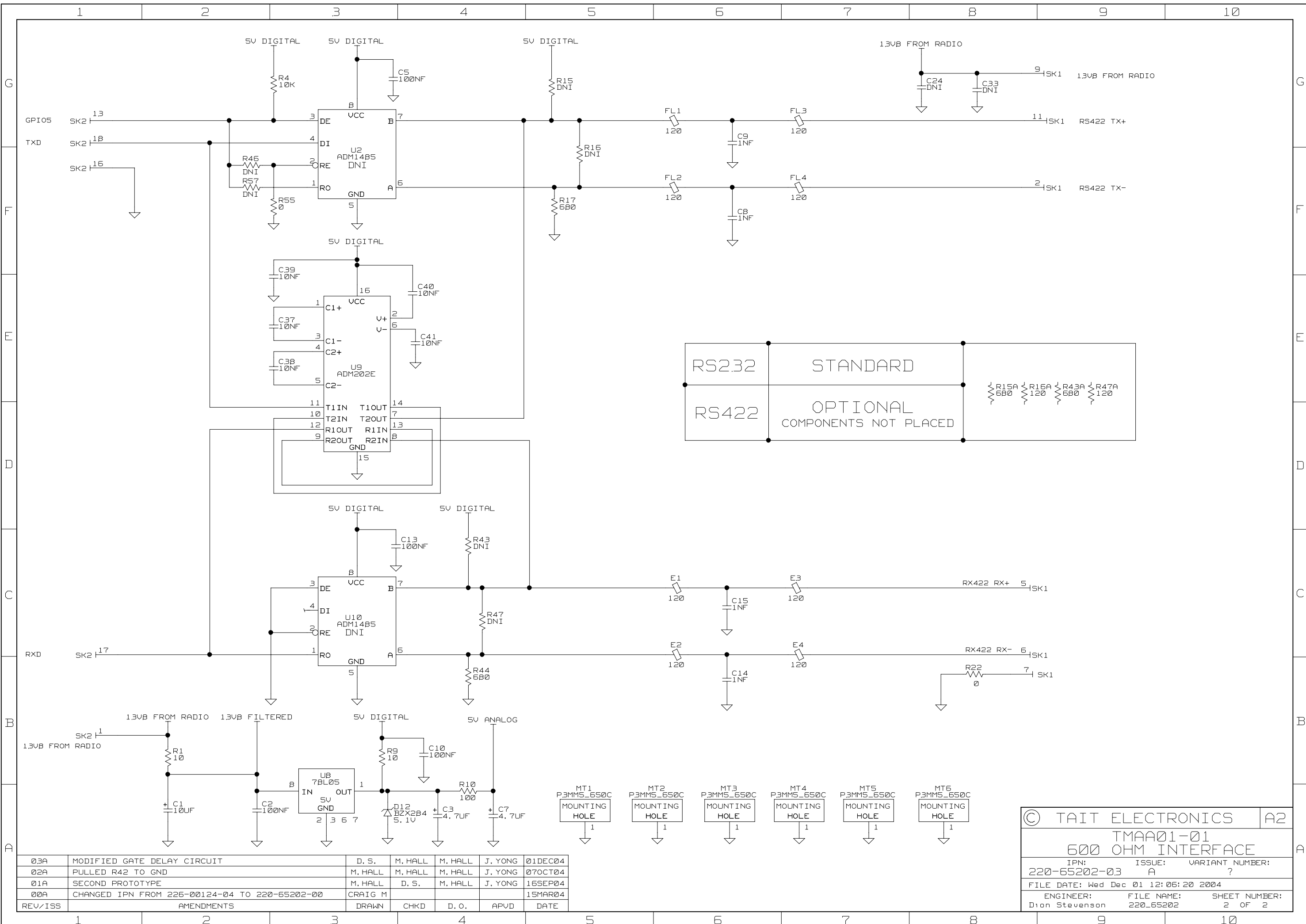


REV/ISS	AMENDMENTS	DRAWN	CHKD	D.O.	APUD	DATE
03A	MODIFIED GATE DELAY CIRCUIT	D.S.	M. HALL	M. HALL	J. YONG	01DEC04
02A	PULLED R42 TO GND	M. HALL	M. HALL	M. HALL	J. YONG	07OCT04
01A	SECOND PROTOTYPE	M. HALL	D.S.	M. HALL	J. YONG	16SEP04
00A	CHANGED IPN FROM 226-08124-04 TO 220-65202-00	CRAIG M				15MAR04



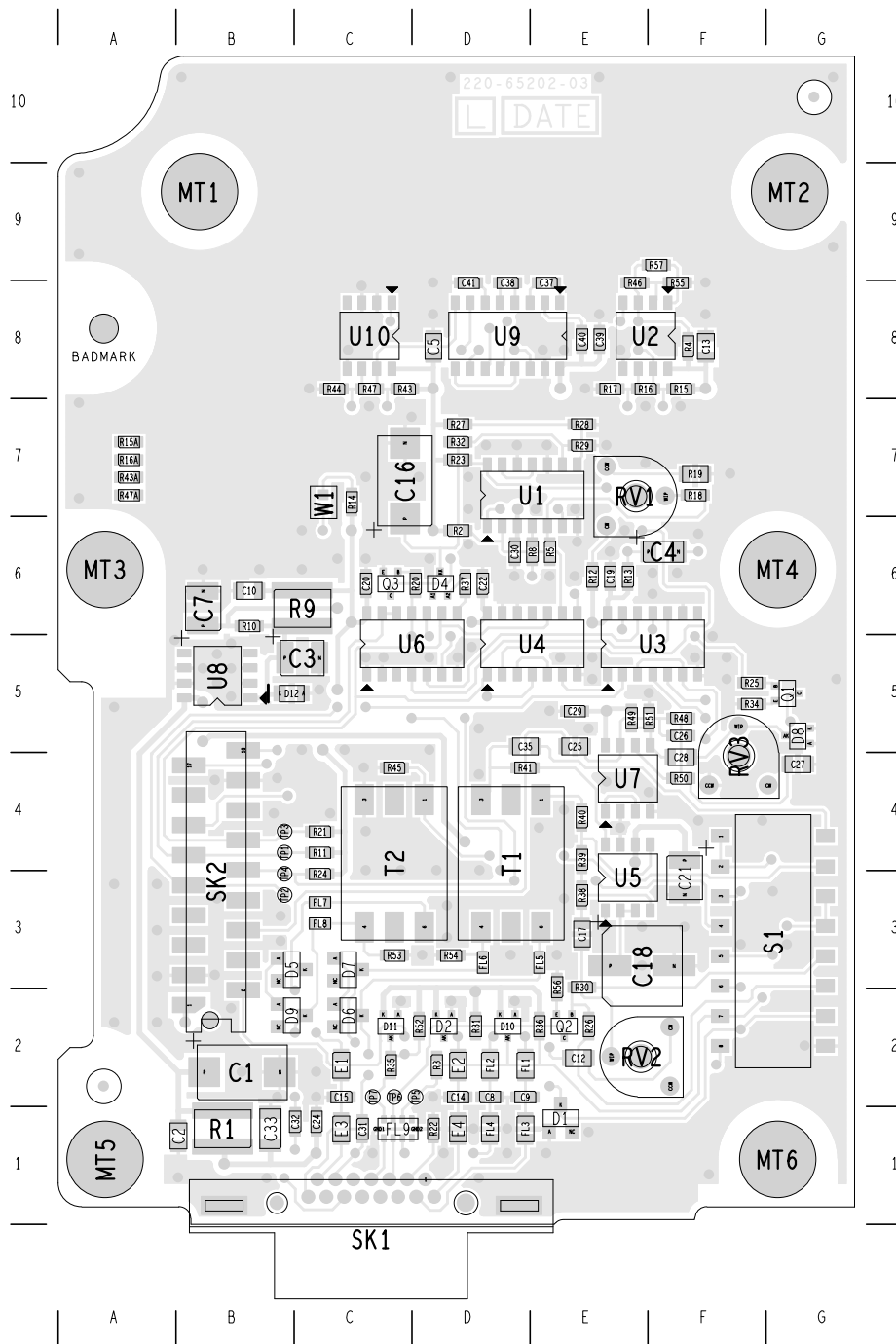
© TAIT ELECTRONICS		A1
TMAA01-01		
500 OHM INTERFACE		
IPN:	ISSUE:	VARIANT NUMBER:
220-65202-03	A	?
FILE DATE: Thu Dec 02 09:27:11 2004		
ENGINEER:	FILE NAME:	SHEET NUMBER:
Dion Stevenson	220_65202	1 OF 2



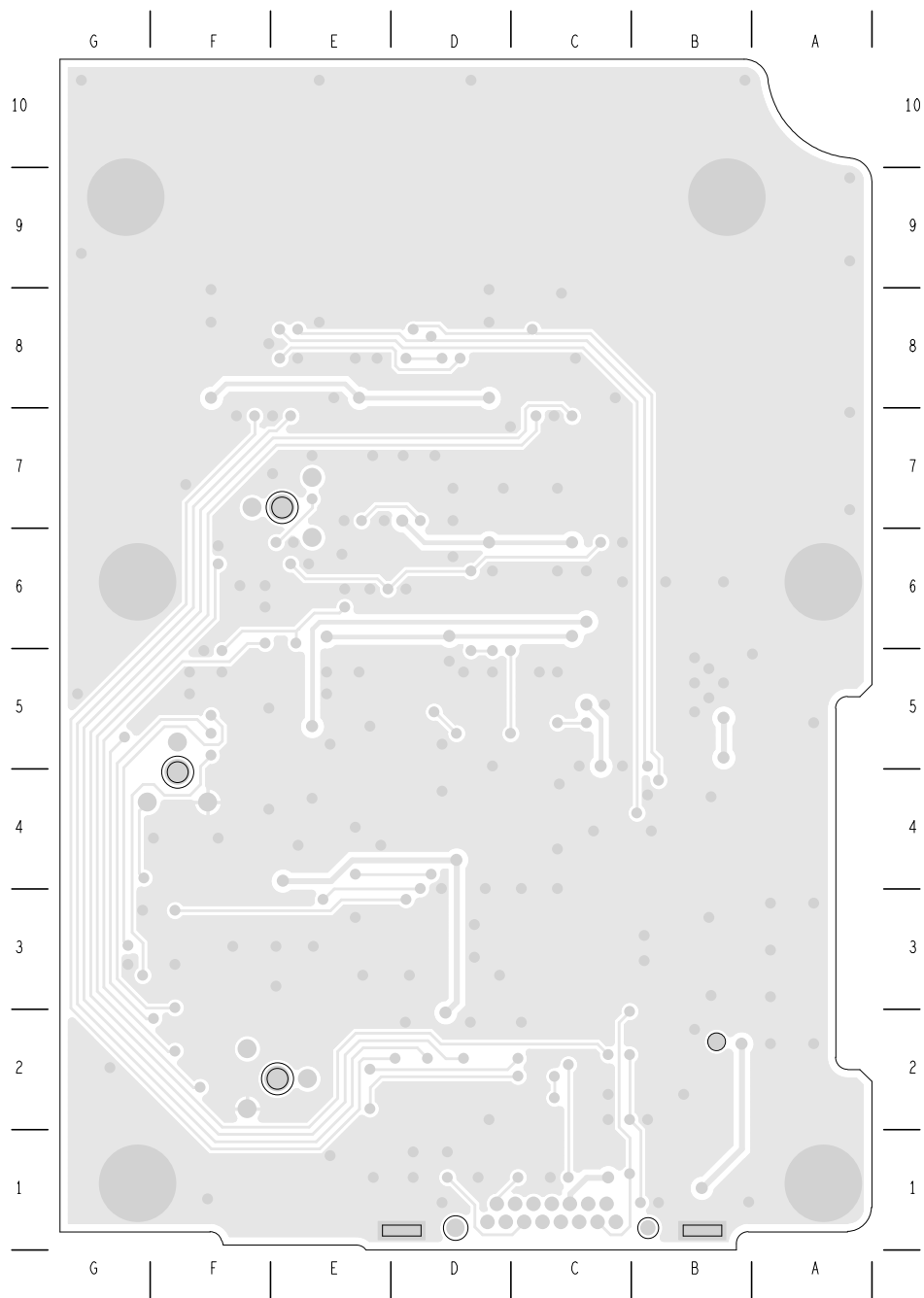
RS232	STANDARD	
RS422	OPTIONAL COMPONENTS NOT PLACED	

REV/ISS	AMENDMENTS	DRAWN	CHKD	D. O.	APVD	DATE
03A	MODIFIED GATE DELAY CIRCUIT	D. S.	M. HALL	M. HALL	J. YONG	01DEC04
02A	PULLED R42 TO GND	M. HALL	M. HALL	M. HALL	J. YONG	07OCT04
01A	SECOND PROTOTYPE	M. HALL	D. S.	M. HALL	J. YONG	16SEP04
00A	CHANGED IPN FROM 225-00124-04 TO 220-65202-00	CRAIG M				15MAR04

© TAIT ELECTRONICS		A2
TMAA01-01		
600 OHM INTERFACE		
IPN:	ISSUE:	VARIANT NUMBER:
220-65202-03	A	?
FILE DATE: Wed Dec 01 12:06:20 2004		
ENGINEER:	FILE NAME:	SHEET NUMBER:
Dion Stevenson	220-65202	2 OF 2



TAIT ELECTRONICS	IPN: 220-65202-03	ISS: A	DATE: 1Dec04	SCALE: NTS
TMAA01-01 600 OHM LINE INTERFACE LAYOUT-PRIMARY-SIDE				



TAIT ELECTRONICS

IPN:
220-65202-03

ISS: A
DATE: 1Dec04

SCALE:
NTS

TMAA01-01 600 OHM LINE INTERFACE LAYOUT-SECONDARY-SIDE